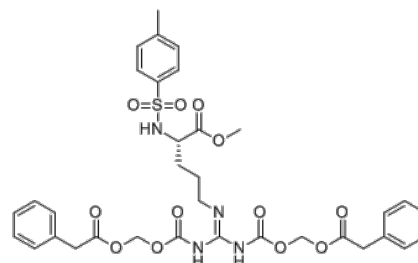


**Product Name** : proTAME  
**Cat. No.** : PC-63040  
**CAS No.** : 1362911-19-0  
**Molecular Formula** : C<sub>34</sub>H<sub>38</sub>N<sub>4</sub>O<sub>12</sub>S  
**Molecular Weight** : 726.8  
**Target** : Cyclin-dependent Kinase (CDK)  
**Solubility** : 10 mM in DMSO



## Biological Activity

proTAME is a cell permeable prodrug of TAME, which is an anaphase-promoting complex/cyclosome (**APC/C**) inhibitor that binds to the APC preferentially suppresses APC/C(Cdc20).

proTAME arrests cells in metaphase without perturbing the spindle, but is dependent on the spindle assembly checkpoint (SAC).

proTAME efficiently targets osteosarcoma in vitro combined with chemotherapeutic agents.

## References

Zeng X, et al. *Cancer Cell*. 2010 Oct 19;18(4):382-95.

Giovinazzi S, et al. *Cell Cycle*. 2013 Aug 15;12(16):2598-607.

Hu K, et al. *Oncotarget*. 2014 May 30;5(10):3088-100.

**Caution: Product has not been fully validated for medical applications. Lab Use Only!**

E-mail: tech@probechem.com